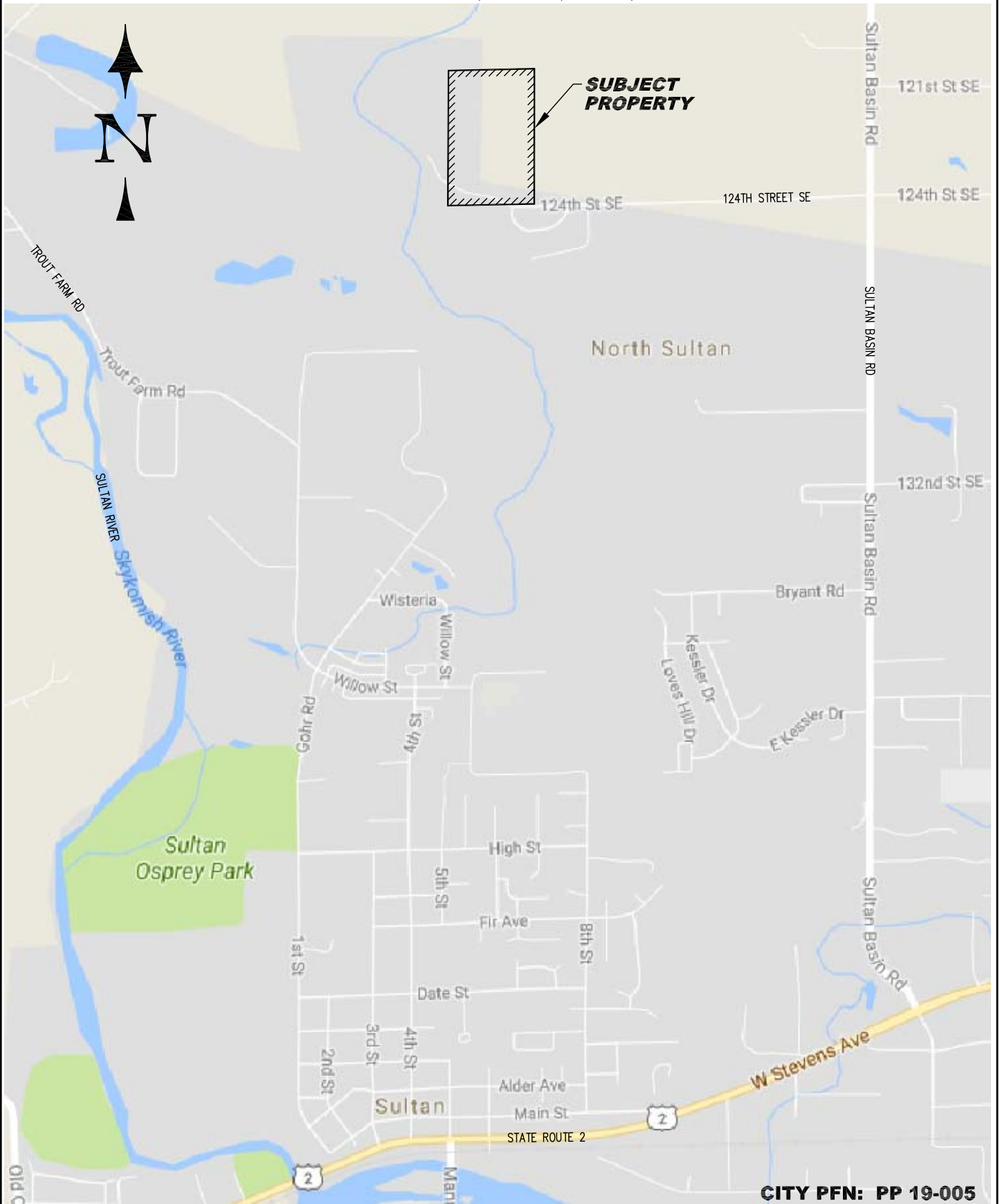


PORTION OF SEC 29, TWP 28N, RGE 8E, W.M.



CITY PFN: PP 19-005

LATTA ENGINEERING PLLC

Consulting Civil Engineers
5970 Birch Point Road, Blaine, WA 98230
Ph: 360 671 7002
2019 (C) LATTA ENGINEERING PLLC (ALL RIGHTS RESERVED)

VICINITY MAP

**COBBLE HILL SUBDIVISION
31129 124TH STREET SE, SULTAN, WA**

DATE: DEC 20, 2019

SCALE: N.T.S.

FIGURE

1