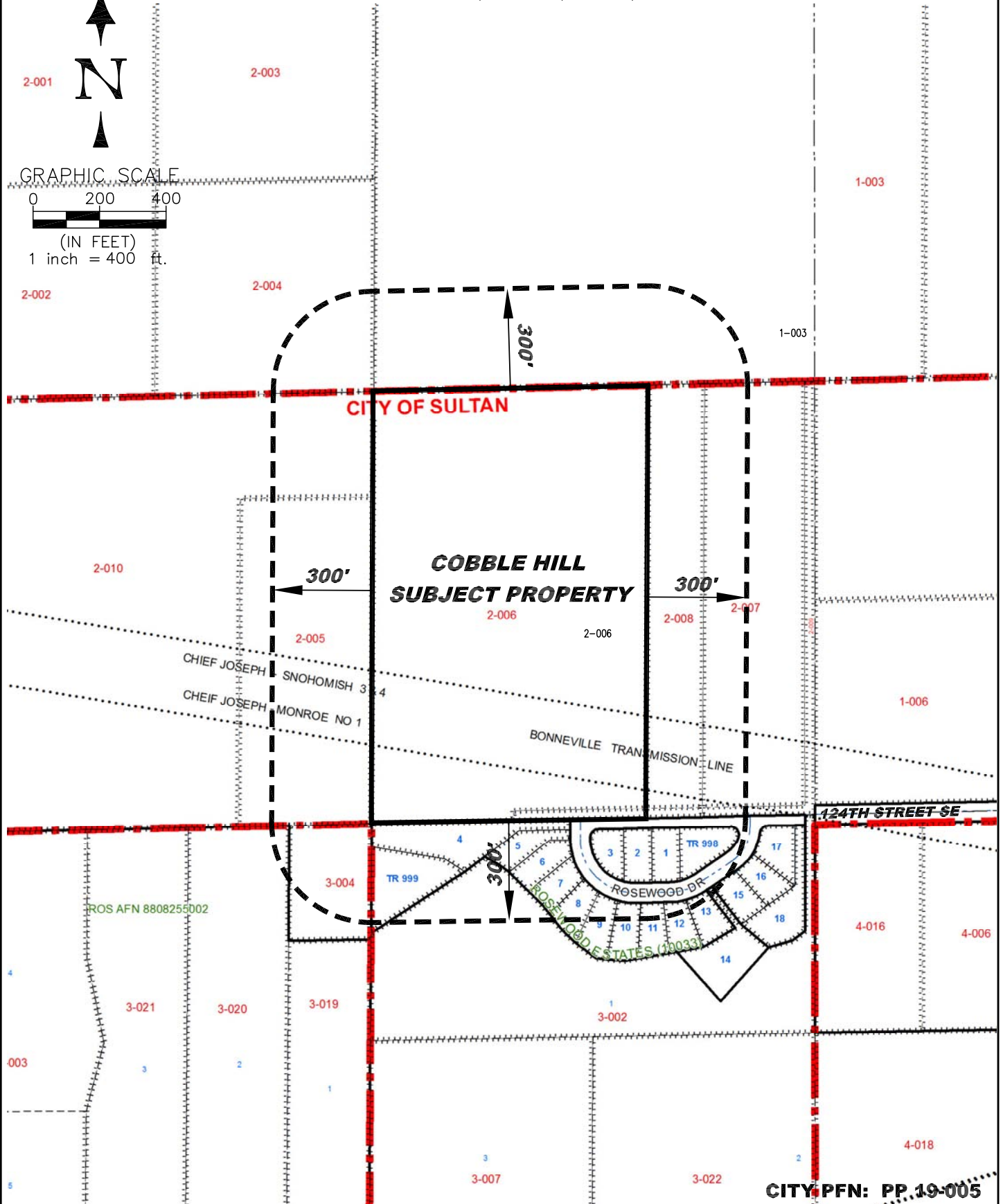
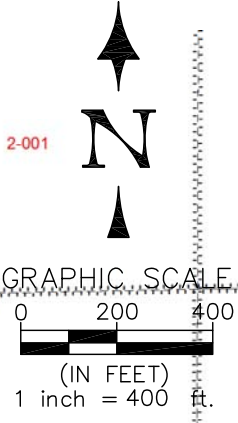


PORTION OF SEC 29, TWP 28N, RGE 8E, W.M.



LATTA ENGINEERING PLLC

Consulting Civil Engineers
5970 Birch Point Road, Blaine, WA 98230
Ph: 360 671 7002
2019 (C) LATTA ENGINEERING PLLC (ALL RIGHTS RESERVED)

SURROUNDING PROPERTIES MAP

COBBLE HILL SUBDIVISION
31129 124TH STREET SE, SULTAN, WA

DATE: DEC 15, 2019

SCALE: 1" = 400'

FIGURE

1